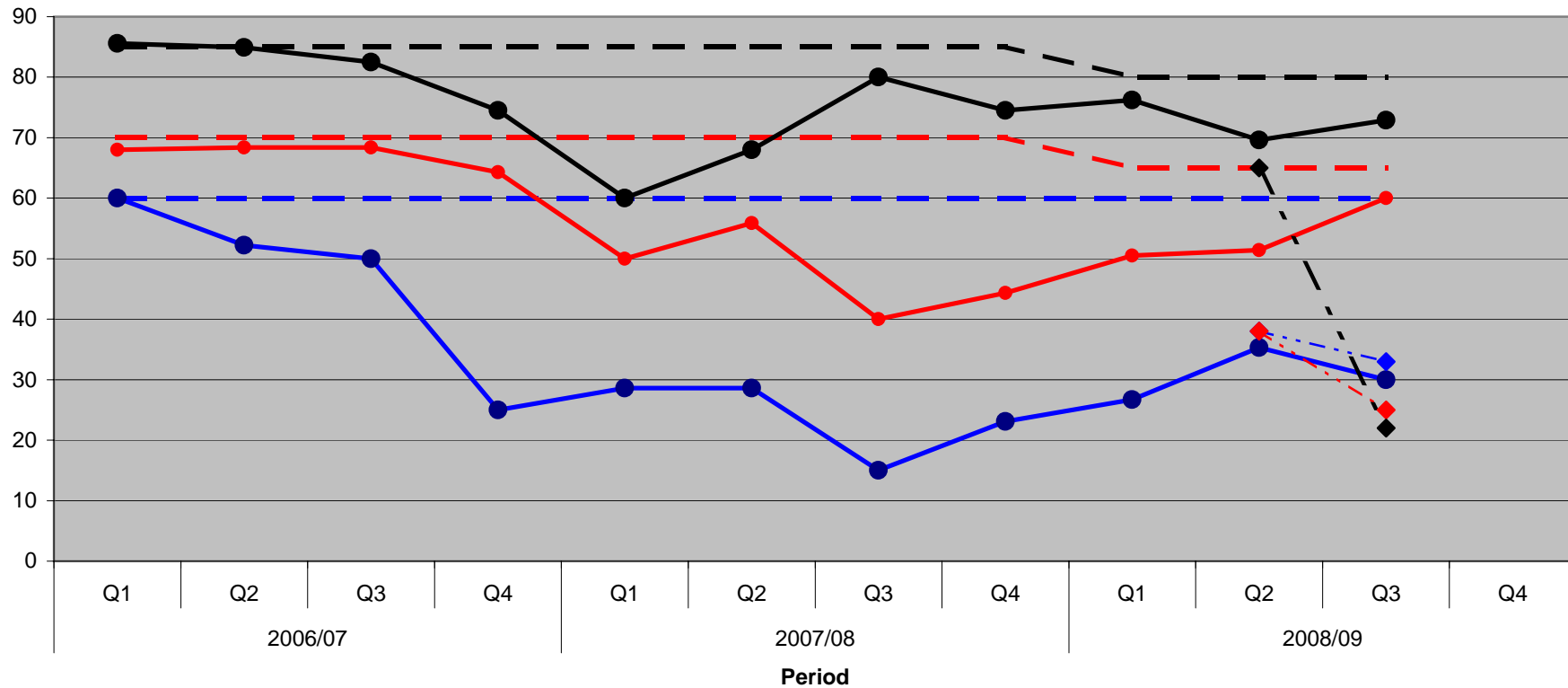


Planning applications determined within target timescale



- BV109a (% of major applications determined within 13 weeks)
- BV109a target for 2007-08 (%)
- - -◆- - - Major applications backlog (number)
- BV109b (% of minor applications determined within 8 weeks)
- - -◆- - - BV109b target for 2007-08 (%)
- - -◆- - - Minor applications backlog (number)
- BV109c (% of other applications determined within 8 weeks)
- - -◆- - - BV109c target for 2007-08 (%)
- - -◆- - - Other applications backlog (number)